

Verifier FSX-090 Portable X-Ray Inspection System

Affordable, High Quality X-Ray System
Suitable for virtually any Quality Inspection

The Verifier HR (FSX-090) is an affordable high-resolution and high-magnification x-ray system ideally suited for failure analysis, manufacturing process validation and rework verification. Systems are CE, CSA and TUV certified and exceed all safety and radiation protection requirements set forth by CDRH and FDA regulations.



Key Features

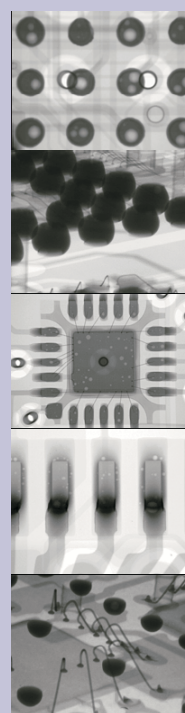
The Verifier HR (FSX-090) is an affordable high resolution and high-magnification x-ray system designed for virtually any electronics or materials quality inspection and defect detection application. Its greater than >650X magnification provides excellent viewing of internal semiconductor connections such as: wire-bonds, die-attach, delamination, voiding and solder joint opens.

- Easy-to-use
- >650X magnification
- Superior imaging quality
- Flexible board/part handling
- Multipurpose inspection tool
- Portable, small 32"W x 34"D x 59"H footprint
- 90kV source provides sufficient power to penetrate challenging packages and dense materials

***Safe:** The Verifier exceeds all safety and radiation protection requirements set forth by CDRH and FDA regulations. Systems are CE, CSA & TUV certified.

Easy-to-Use Controls

Intuitive controls and indicators for On/Off, Gain, Zoom, Focus and Interlock functions. Operators can be trained quickly and easily.



Specifications

Hardware

- Footprint: 32"W x 34"L x 59"H
- Board Handling: up to 16" x 18"
- Angled Viewing: up to 30° (standard fixture)
- X-Ray Source: 90kV, 5 micron Microfocus
- Magnification: >650X
- Field-of-View: up to 40mm
- Resolution: >40 lp/mm
- PC: Intel/ATX mini tower w/ printer & CDRW
- Flat Panel Display: 17"(19" optional)
- Network Ready: Ethernet 10/100 base-T

System/Image Processor Software

- Operating System: Windows™ XP Pro
- Image Processor: Verifier VIP (standard)

Optional Image Processors

- VIP Plus Enhanced Image Processor
- VIPx Advanced Image Processor

Flexible Sample Holder

- Sample Door: 28" wide, for easy load/unload
- Manual X/Y sample positioner: 16" x 18"
- Angled Viewing: 0-30° (standard fixture)
- Rotation Fixtures: Manual and Motorized options for 306° rotation of small boards.